



Fortus 900mc Acceleration Kit

3D print large tools and parts up to 3 times faster.

Introducing the Fortus 900mc™ Acceleration Kit – a new solution for building large parts and tools printed with ASA and ULTEM™ 1010 resin. This kit offers a cost-effective and time-saving solution for printing large composite tools, prototypes, jigs and fixtures. The Fortus 900mc Acceleration Kit features:

- Largest available slice height for FDM® 3D Printers
- New, larger diameter T40A Tip
- Newly developed throughput enhancement
- Plug-and-play solution that requires no additional hardware

PRINT SPEED COMPARISON	
T20 Tip (13 slice)	160 hours
T40A Tip (20 slice)	63 hours
Time Savings	97 hours (61%)

For printing the large machine panel shown.





Fortus 900mc Acceleration Kit

Choose the best material package for your needs.

Stratasys offers six kit options tailored to your material consumption. If you already have ASA and/or ULTEM 1010 resin material options, start with our Fast Package options. We also offer bundles if you don't currently have those material solutions, making it easy to incorporate into your workflow and start realizing throughput efficiencies immediately. [For more information on kit options, to purchase, or to contact your local reseller, please contact a Stratasys Sales Representative at sales@stratasys.com.](#)



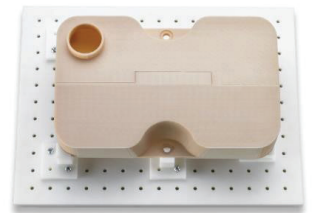
CUSTOMERS REQUIRING AN ASA OR ULTEM 1010 RESIN MATERIAL OPTION

ASA Material Option (One-time buy)

- Allows Fortus 900mc to run ASA material
- Six ASA model material canisters (355-02140)
- Six SR-30 support material canisters
- Three packages of small build sheets (qty 20)
- Three packages of large build sheets (qty 10)
- Three T16 tip sets (T16/T12SR30)
- Three T12 tip sets (T12/T12SR30)
- Three T40A tip sets (T40A/T20)

ULTEM 1010 Resin Material Option (One-time buy)

- Allows Fortus 900mc to run ULTEM 1010 resin material
- Six ULTEM 1010 resin model material canisters
- Six ULTEM 1010 resin support material canisters
- Three packages of small build sheets (qty 20)
- Three packages of large build sheets (qty 10)
- Three T14 tip sets (T14/T16)
- Three T40A tip sets (T40A/T20)



CUSTOMERS WHO ALREADY HAVE AN ASA OR ULTEM 1010 RESIN MATERIAL OPTION

ASA Fast Package A

- Two XTEND 500 Fortus Plus ASA canisters
- One XTEND 500 Fortus Plus support canister
- Two each - T40A tips and T20B support tips
- Fortus Plus upgrade with XTEND hardware (if needed)

ULTEM 1010 Resin Fast Package A

- 10 model canisters
- Five support canisters
- Two each - T40A tips and standard T20 support tips

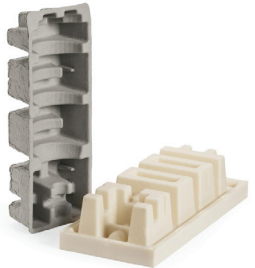


ASA High Volume Fast Package B

- Five XTEND 500 ASA canisters
- Two XTEND 500 support canisters
- Two each - T40A tips and T20B support tips
- Fortus plus upgrade with XTEND hardware (if needed)

ULTEM 1010 Resin High Volume Fast Package B

- 25 model canisters
- Eight support canisters
- Two each - T40A tips and standard T20 support tips



HEADQUARTERS

7665 Commerce Way, Eden Prairie, MN 55344
 +1 888 480-3548 (US Toll Free)
 +1 952 937-3000 (Intl)
 +1 952 937-0070 (Fax)

2 Holtzman St., Science Park, PO Box 2496
 Rehovot 76124, Israel
 +972 74 745-4000
 +972 74 745-5000 (Fax)

E info@stratasys.com / STRATASYS.COM

ISO 9001:2008 Certified

©2016 Stratasys. All rights reserved. Stratasys, Stratasys signet, "The 3D Printing Solutions Company", FDM, Fortus and Fortus 900mc are trademarks of Stratasys Ltd. and/or its subsidiaries or affiliates and may be registered in certain jurisdictions. ULTEM™ is a registered trademark of SABIC or affiliates. All other trademarks belong to their respective owners. Product specifications subject to change without notice. FortusAccelerationKitHandout_0516